

AUTHOR'S CORRECTION

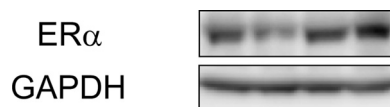
Turning Off Estrogen Receptor β -Mediated Transcription Requires Estrogen-Dependent Receptor Proteolysis

Yukiyo Tateishi, Raku Sonoo, Yu-ichi Sekiya, Nanae Sunahara, Miwako Kawano, Mitsutoshi Wayama, Ryuichi Hirota, Yoh-ichi Kawabe, Akiko Murayama, Shigeaki Kato, Keiji Kimura, Junn Yanagisawa

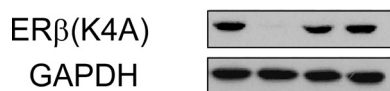
Graduate School of Life and Environmental Sciences, University of Tsukuba, Tsukuba Science City, Ibaraki, Japan; Ankhs Incorporated, Tsukuba Industrial Liaison and Cooperative Research Center, University of Tsukuba, Tsukuba Science City, Ibaraki, Japan; Institute of Molecular and Cellular Biosciences, University of Tokyo, Bunkyo-ku, Tokyo, Japan

Volume 26, no. 21, p. 7966–7976, 2006. Some GAPDH (glyceraldehyde-3-phosphate dehydrogenase) panels of Western blots were duplicated in Fig. 1E, 5A, 6A, and 6B. In Fig. 2A, panels for estrogen receptor β (K4A) [ER β (K4A)] and GAPDH were duplicates of those for ER β and GAPDH. Since we could not identify the original GAPDH panels which were set with ER panels, we have repeated the experiments and now provide corrected panels. None of these corrections change any of the results or conclusions of the paper. We apologize for any confusion these errors might have caused.

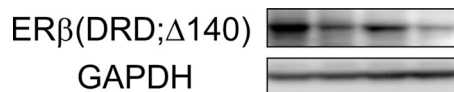
Page 7968, Fig. 1E: The ER α and associated GAPDH panels should appear as shown below.



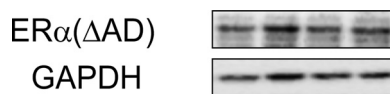
Page 7968, Fig. 2A: The ER β (K4A) and associated GAPDH panels should appear as shown below.



Page 7971, Fig. 5A: The ER β (DRD; Δ 140) and associated GAPDH panels should appear as shown below.



Page 7972, Fig. 6A: The ER α (Δ AD) and associated GAPDH panels should appear as shown below.



Page 7972, Fig. 6B: The ER β , ER β (Δ 519-530), and associated GAPDH panels should appear as shown below.

