

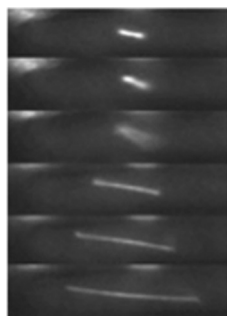


# Correction for Nakano et al., “Rad51-Dependent Aberrant Chromosome Structures at Telomeres and Ribosomal DNA Activate the Spindle Assembly Checkpoint”

Akemi Nakano,<sup>a</sup> Kenta Masuda,<sup>a</sup> Taisuke Hiromoto,<sup>a</sup> Katsunori Takahashi,<sup>a</sup> Yoshitake Matsumoto,<sup>a</sup> Ahmed G. K. Habib,<sup>a</sup> Ahmed G. G. Darwish,<sup>a,b</sup> Masashi Yukawa,<sup>a</sup> Eiko Tsuchiya,<sup>a</sup> Masaru Ueno<sup>a</sup>

Department of Molecular Biotechnology, Graduate School of Advanced Sciences of Matter, Hiroshima University, Higashi-Hiroshima, Japan<sup>a</sup>; Department of Biochemistry, Faculty of Agriculture, Minia University, Minia, Egypt<sup>b</sup>

Volume 34, no. 8, p. 1389–1397, 2014, <https://doi.org/10.1128/MCB.01704-13>. Page 1391, Fig. 1A: The fluorescence images of the *rqh1-hd* panel were replaced with those of the wild-type panel by mistake during preparation of high-resolution images after manuscript acceptance. The correct *rqh1-hd* panel, used during review, is shown below.



**Citation** Nakano A, Masuda K, Hiromoto T, Takahashi K, Matsumoto Y, Habib AGK, Darwish AGG, Yukawa M, Tsuchiya E, Ueno M. 2017. Correction for Nakano et al., “Rad51-dependent aberrant chromosome structures at telomeres and ribosomal DNA activate the spindle assembly checkpoint.” *Mol Cell Biol* 37:e00175-17. <https://doi.org/10.1128/MCB.00175-17>.

**Copyright** © 2017 American Society for Microbiology. All Rights Reserved.

A. G. G. Darwish could not be reached when asked to agree to the correction.